

Travel to
Holy Road
Catholic Primary School



Our school travel plan

Our school travel plan aims to reduce the number of cars around both school sites at the start and end of the school day. We are working to encourage families to choose alternate modes of travel for the school run. Children are being given opportunities to learn road safety, cycling and scooting skills to help them in keeping safe when walking, scooting and cycling to school.

Why walk, cycle or scooter to school?

Walking, cycling and scooting are all good forms of exercise. Research shows that children who walk to school often arrive calmer and ready to learn. Scooting and cycling to school can be a good time to talk with your family, whilst having some fun!

Walking, scooting and cycling are good for the local environment and help to reduce congestion and pollution.

Don't forget to keep your child safe by ensuring they always wear a suitable helmet when cycling or scooting to school!

5 Minute Walk Zone

If you have to travel by car to school, please try and park outside our 5 minute zone, with care and consideration for local residents. Parking outside or close to the school causes congestion and makes the roads more dangerous to other road users. Parked cars make crossing the roads more difficult and obstruct the view of oncoming traffic. Help us reduce cars around the school site and make it safer for children arriving and leaving school.

If you live inside the 5 minute zone we encourage you to walk, cycle or scoot to school at all times.

'Riding your bike to school is great fun.'

Early opening of playground

EYFS & KS1

From 8:30am the Groundwell Road end of the playground is a staff supervised area where parents can leave their children before the start of the school day.

Please inform staff if you require your child to be supervised during this time and please ensure that you do not leave them in any other part of the playground.

KS2

From 8:30am the Upham Road playground will be open and will be a staff supervised area where parents can leave their children before the start of the school day.

Children **are not** permitted to be left before this time.

Safety on our school site

Both school sites are situated on, or near busy roads. Please ensure that you make road safety a regular topic of conversation and always use the crossings and pavements provided.

We ask pupils that are cycling or scooting to and from school **not** to use their bike or scooter on the school playground.

'Walking is good exercise and it gives you more energy!'

'Scooting helps make you healthy.'



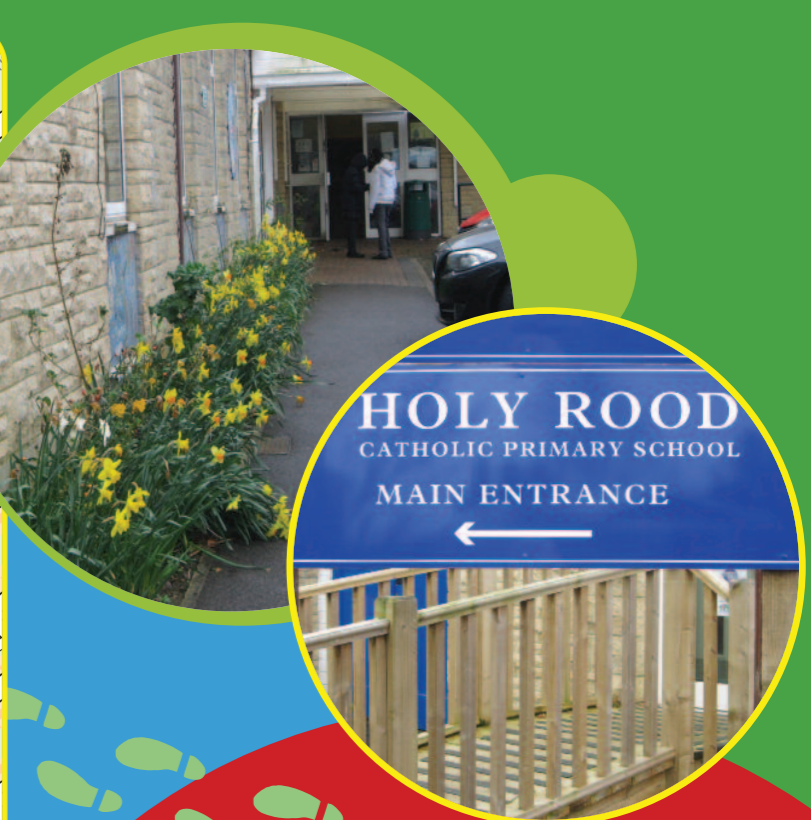
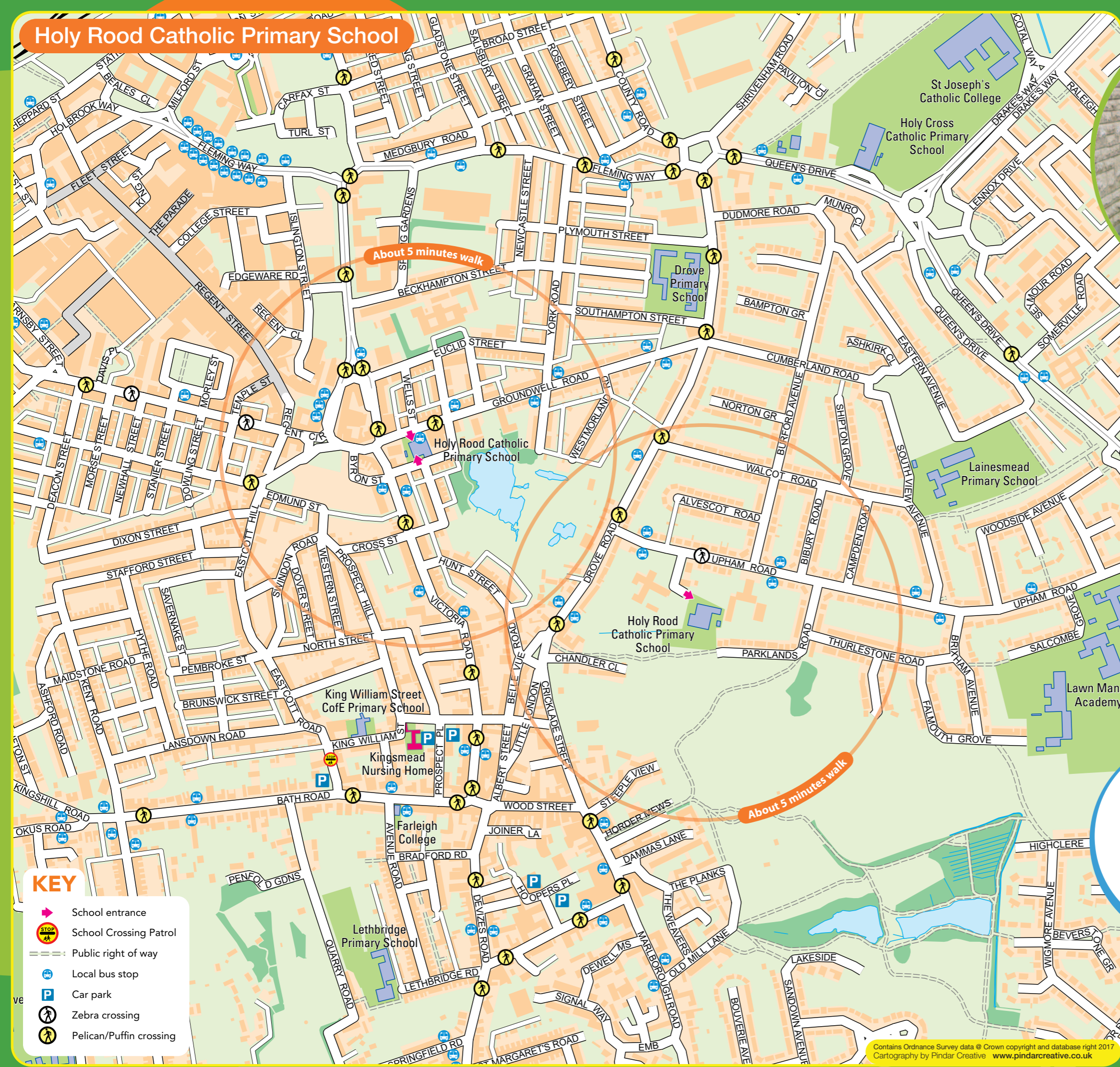
Modeshift STARS is a national schools award scheme supported by the Department of Transport. Recognising schools demonstrating excellence in sustainable travel, which includes cycling and walking. To find out more about the awards visit www.modeshiftstars.org

Holy Road Primary have achieved:



Holy Road Catholic Primary School
Groundwell Road, Swindon, Wiltshire, SN1 2LU
01793 523802
www.holyroodcatholicprimary.co.uk

Holy Road Catholic Primary School



'Walking to school makes us fit and saves money for other things!'



'You should scoot to school to not waste time in traffic!'