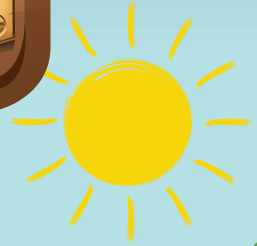
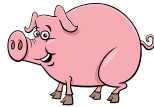


Swindon Summer Trails Challenge

Trail #5

Along the Eastern Flyer from
Greenbridge to Swindon Town Centre
The Pig Trail



SWINDON
BOROUGH COUNCIL

Follow the trail below, answer the question, and at the end of the trail show this leaflet at the partner location to claim your free badge and enter into the prize draw.

Distance: 1.9 miles

Starting Point: The trail starts on the cycle path outside Greenbridge Retail Park, at the Eastern Flyer sign near to the bus stop. You can get here by bus - plan your journey at <https://www.swindontravelchoices.co.uk/plan-a-journey/>.

What Three Words: ///empire.laying.engine

1. Walk along Drakes Way with Greenbridge shops on your right. Keep walking until you get to the Garrard Way junction.
2. Cross Garrard Way using the pedestrian crossing. Keep straight and you will pass the car showroom and storage business on your right, then the path slopes downhill. At the bottom, take time to admire the mural in the subway that leads to Marlowe Avenue, but then turn right and head along the path.
3. Head over the footbridge over the River Cole and then take the path on the left. You can glimpse the River Cole on the left - most of this river runs underground through the Swindon area.
4. At Ocotal Way, use the pedestrian crossing to get over the road and continue straight. This is the old canal route into Swindon. You will pass under Marsh Farm bridge, which dates from 1805. It's one of the oldest bridges in Swindon.
5. As you emerge onto Queens Drive, turn right and follow the pavement in an anti-clockwise direction around the Magic Roundabout. Once past Swindon Town Football Club, use the pedestrian crossing to get over County Road. Turn right and take the first road on the left (Gambia Street).
6. At the end of Gambia Street, turn right onto Roseberry Street, then at the next junction turn left (Bathurst Road). At the end of Bathurst Road, carefully cross onto Medgbury Road and continue until you come out at Corporation Street.
7. Take a moment to look behind you at the mural on the side of the building. Then use the crossing to get over to the Leonardo Hotel. Follow Princes Street round the corner to the left and head up towards Regents Circus. Use the pedestrian crossing after the bus stops and you will see the Swindon Central Library ahead on the right. This is where you can post your prize draw entry and collect a badge. The library is open 10am to 5.30pm Monday to Friday, and 10am to 4pm on Saturdays.

If the library is closed, you can enter the prize draw via this QR code or at <https://www.swindontravelchoices.co.uk/home/activeswindonchallenge/>

**Badges are available for the first 200 people to complete the trail.*



Getting back to the start: Stagecoach Bus S6 or the 7 leave regularly from the bus station and travel back to Greenbridge. Alternatively, you can catch the Stagecoach Bus S6 on Fleming Way (Spring Gardens stop, opposite The Range).

Congratulations on finishing the walk and we hope you had fun exploring!

ENTRY FORM - Trail #5

Tear off this entry form and post at Swindon's Central Library

Name: _____

Home postcode: _____
(for statistical purposes only)

Question: What have you seen on any of the murals today?

Email address (Please print carefully):
(We will only use your email to inform you if you have won)

How many people did the trail in your group?

Adults: _____ Children: _____

Deadline to enter prize draw: Midnight on Sunday 8th September 2024





www.swindontravelchoices.co.uk

