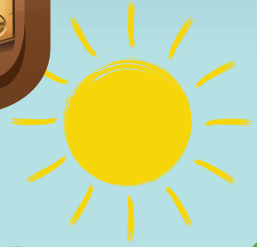
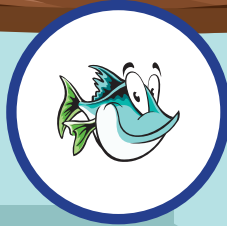


# Swindon Summer Trails Challenge

## Trail #2

A loop of Coate Water  
The Fish Trail



**SWINDON**  
BOROUGH COUNCIL

Follow the trail below, answer the question, and at the end of the trail show this leaflet at the partner location to claim your free badge and enter into the prize draw.

## Distance: 2 miles

The trail starts at the entrance gates to Coate, on Marlborough Road. You can get here by bus - plan your journey at <https://www.swindontravelchoices.co.uk/plan-a-journey/>.

What Three Words: ///mushroom.warblers.snappy

1. Walk along the path into Coate Water Country Park. Keep going straight ahead.
2. You will soon see the diving platform and toilet block ahead of you. Continue towards the path at the lake.
3. Once at the lake, turn left and begin a clockwise route around the lake.

**Things to note:** You can get to Richard Jefferies Museum from the lake - it is signposted from the northern corner. There is also a model railway in this corner of the park, which is open on Sundays.

4. Continue on the path as it veers right around the eastern side of the lake.

**Things to see:** The Garden of reflection is on the right. It was created in 2022 as a pollinator and a place for people to immerse themselves in nature. A little further on is the Council Oak - why not read the plaque to find out more about it?

5. At the end of the lake, cross the bridge, and continue to follow the path signed "Lakeside Walk". Be sure to look up and see how many bird boxes you can spot on this stretch.
6. Cross the next wooden bridge and take care as the path is close to the road at this point. Keep following the main path as it loops clockwise. The avenue of trees will help guide you back towards the start.
7. Soon you will be back to the café by the diving platform. This is where you can collect your limited edition badge\* and post your entry. (Cafe opening hours 10am - 4pm, daily)

If the cafe is closed, you can enter the prize draw via this QR code or at [www.swindontravelchoices.co.uk/home/activeswindonchallenge/](https://www.swindontravelchoices.co.uk/home/activeswindonchallenge/)  
\*Badges are available for the first 200 people to complete the trail.



**Congratulations on finishing the walk and we hope you had fun exploring!**

## ENTRY FORM - Trail #2

Tear off this entry form and post at the Coate Water Café

Name: \_\_\_\_\_

Home postcode: \_\_\_\_\_  
(for statistical purposes only)

Question: Name an animal that you saw at Coate Water today?

\_\_\_\_\_

Email address (Please print carefully):  
(We will only use your email to inform you if you have won)

\_\_\_\_\_

How many people did the trail in your group?

Adults: \_\_\_\_\_ Children: \_\_\_\_\_

Deadline to enter prize draw: Midnight on Sunday 8th September 2024





[www.swindontravelchoices.co.uk](http://www.swindontravelchoices.co.uk)

